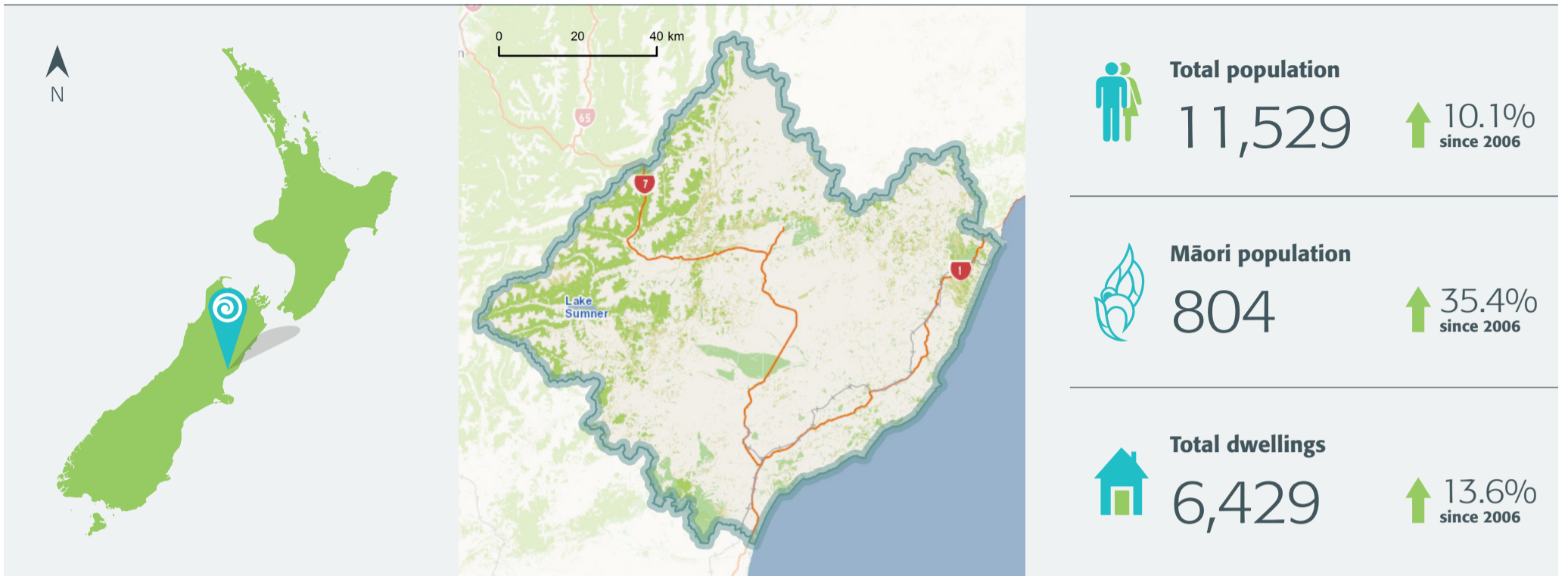
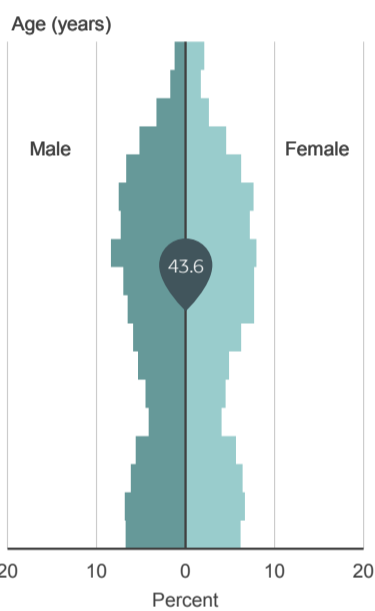


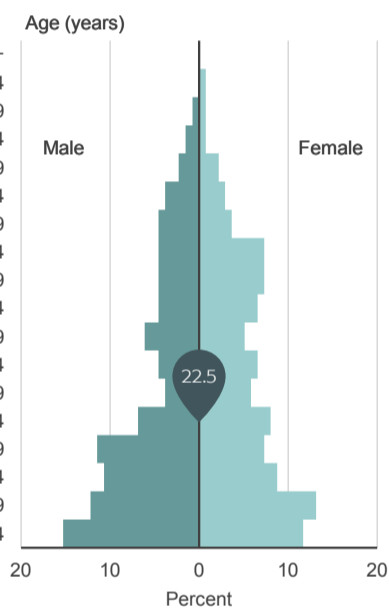
QuickStats about Hurunui District



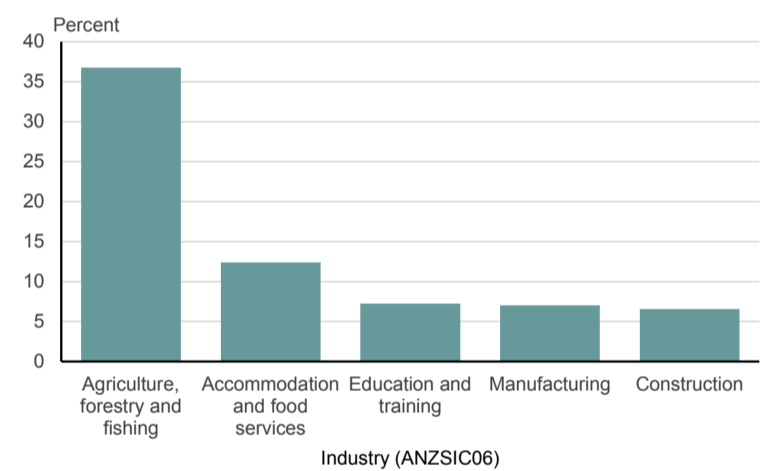
Age and sex of people
Hurunui District
2013 Census



Age and sex of Māori
Hurunui District
2013 Census



Top five industries in Hurunui District
By employee count
For year ended February 2013



How Hurunui District compares with the national average

Individuals

Major ethnic groups

	European	93.4%	vs	74.0%
	Māori	7.3%	vs	14.9%
	Pacific peoples	0.8%	vs	7.4%
	Asian	2.3%	vs	11.8%
	Middle Eastern/ Latin American/ African	0.6%	vs	1.2%
	Other	1.9%	vs	1.7%

Percent born overseas

15.0% vs 25.2%

Percent of people with a formal qualification*

76.1% vs 79.1%

Median income*

\$28,600 vs \$28,500

*For people aged 15 years and over.

Households

Percent of households that own their dwelling*

68.9% vs 64.8%

Median weekly rent

\$180 vs \$280

Percent of households with internet access

75.1% vs 76.8%

*Or hold it in a family trust.